

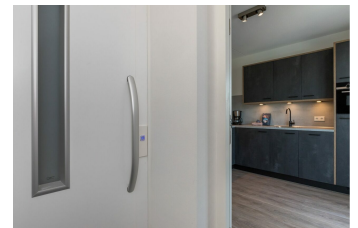
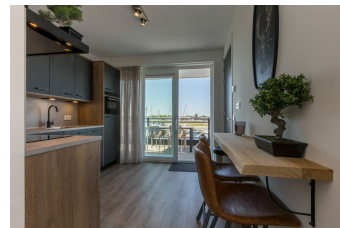
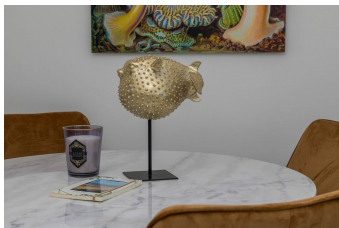
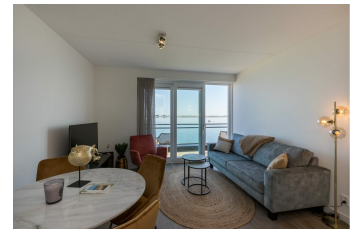
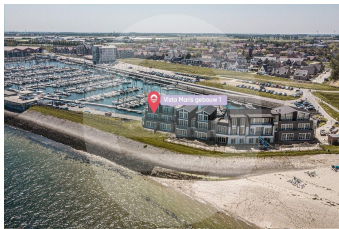
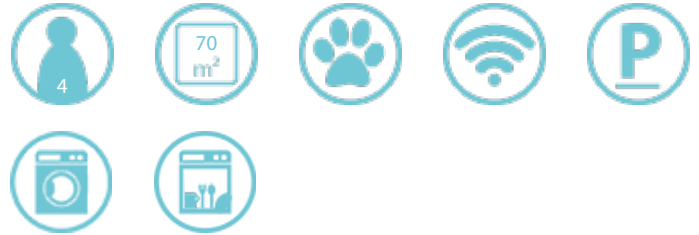
Havenweg 8 St. Annaland Sint-Annaland

'Bright apartment with large balconies, located directly along the marina'



Ferienunterkünfte
Vakantiewoningen
Holiday Homes

www.peoos.eu



This single-level, four-person apartment is on the first floor of the small-scale Vista Maris apartment complex. Up to two pets are welcome. The apartment windows extend to the floor, allowing a lot of light into all the rooms. The sliding doors lead onto the large balconies (27 m² in total) with water views on two sides.

The modern, urban chic interior has been carefully selected to make you feel right at home. The materials are of high quality and have a warm and homely feel. When you return after a long day outdoors, you can relax and enjoy the flat-screen television in the living room. The kitchen has a combination microwave, a dishwasher, a fridge, a freezer and a toaster. There is also a Nespresso filter coffee machine.

The bathroom has a spacious walk-in shower and a washbasin. The toilet is in the hallway. The bedrooms have a boxspring (180x200 cm), two bedside tables and a wardrobe. There is also a fold-away cot (60x120 cm). The bedroom on the harbour side has a TV. Wake up peacefully with a view of the water on both sides- what more could you want?

Don't forget your bicycle. The large storage room on the ground floor has a charging point for electric bicycles. The apartment has one parking space, and there is plenty of parking available within walking distance.

Surrounding area

Aktuelle Preise finden sie auf unserer Homepage.

Havenweg 8 St. Annaland Sint-Annaland

'Bright apartment with large balconies, located directly along the marina'



Ferienunterkünfte
Vakantiewoningen
Holiday Homes

www.peoos.eu

The apartment has a fantastic view over a unique water landscape that stretches for miles, interspersed with sandbanks. The flocks of migratory birds that fly in all year round to dive for fish also make for a remarkable spectacle. There is a small beach right in front of the door where families with small children can enjoy a day in the sun.

The centre of Sint- Annaland is within walking distance, as is a large Jumbo supermarket. If you don't feel like cooking, there are several restaurants just around the corner. There is also a beautiful walking and cycling path to Stavenisse. A tour boat for spotting seals and porpoises departs from the marina. There are also sailing boats for hire, and day trips are organised to Zierikzee (you can bring your bike).

The area around the holiday home is characterised by greenery, walking and cycling routes. Old dikes, mills, farmhouses and authentic villages can be found everywhere in this area, along with peace, space and water. In short: whether you love the beach, walking or cycling, from this apartment, you will make memories that you will not soon forget.

[Aktuelle Preise finden sie auf unserer Homepage.](#)