

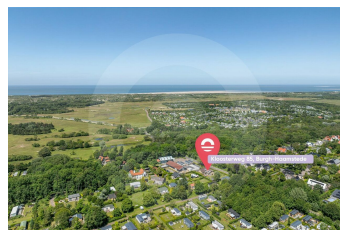
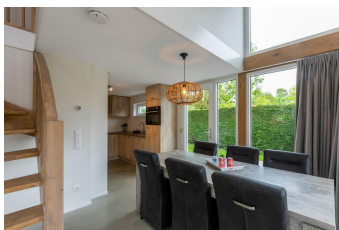
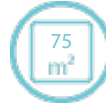
Zonenvlinder Burgh-Haamstede

Sustainable Holiday Home in Woodland Location, Near Beach



Ferienunterkünfte
Vakantiewoningen
Holiday Homes

www.peoos.eu



Text:

The charming detached holiday home is made from sustainable building materials and is located in a wooded area, just a short distance from the beach. The large glass facades provide a view from the entire living area of the green enclosed garden, where you can enjoy private relaxation. Conversely, the beautiful window panes allow daylight to pour into the house, which is why the property is aptly named "The Sunbeam." Even on cloudy days, the house maintains its light character. The loft also gives the home a spacious and open feel.

Comfortable Living Space

The detached house sits on a spacious plot. You enter the house through the hallway, which also leads to a toilet and a separate storage room containing the washing machine. The living room features a seating area with a television. The stairs to the upper floor lead directly into the living room, creating a pleasant division between the living and dining areas. The dining table is in the extension of the kitchen and seats six people. The kitchen is equipped with modern appliances, including an induction stove, microwave, dishwasher, refrigerator, coffee maker, and kettle. The ground floor also features a bedroom with an ensuite bathroom. The bedroom has a double bed (two single mattresses, 90x200 cm), bedside tables, and a wardrobe. The ensuite bathroom has a shower and a sink.

Bedrooms and Bathrooms

On the first floor, there are two additional bedrooms, one with a double bed (two separate single box-spring beds), and the other with two single beds. Both bedrooms have a wardrobe. The bathroom on this floor features a walk-in shower and a washbasin, and there is also a second separate toilet.

[Aktuelle Preise finden sie auf unserer Homepage.](#)

Beautiful Garden and Amenities

From the living room, you can step directly onto the terrace (20m²) and into the green, enclosed garden (50m²), which is privately situated. Sit in one of the comfortable garden chairs (6 in total) at the garden table, under the parasol, and enjoy your holiday. The garden also provides the possibility to charge your bicycles under cover. The house has two parking spaces across from the property, which are available for free. A crib is provided for children up to 2 years, and other amenities must be brought by guests. Pets are not allowed in this property.

Activities for All Ages

The house is located near Camping De Duinhoeve, where you can use all the facilities. The campsite is a great place for children, with a water playground and various indoor and outdoor play areas, plus an animation program. While the children play, you can relax on the adjacent terrace. When you're hungry, head to the restaurant or grab a snack at the snackbar or pizzeria. For small groceries, there's a supermarket on the campsite. Adults can also enjoy activities such as mini-golf, billiards, darts, and there are saunas and spa baths for a more relaxing experience.

Explore Schouwen-Duiveland

If you want to discover more of Schouwen-Duiveland, there's plenty to see. Burgh-Haamstede and the surrounding areas offer beautiful nature reserves, such as the dune-rich "Kop van Schouwen." Go for a walk or bike ride and take binoculars with you—there are plenty of rare birds to spot! Visit the Oosterscheldekering and stop by Neeltje Jans, an attraction park and museum about the Delta Works, where you can enjoy fresh mussels and oysters directly from the Oosterschelde.

(FS_PeOos)

[Aktuelle Preise finden sie auf unserer Homepage.](#)